

SYSTEMS,
AIR CONDITIONING



AND
REFRIGERATION
SYSTEMS
FOR VEHICLES

Sales Conditions

1. GENERAL PROVISIONS

(a) The terms and conditions set out below (the "General Conditions of Sale") form an integral part of the contracts concluded between AUTOCLIMA and the Buyer for the supply of AUTOCLIMA products (the "Products");
 (b) The General Conditions of Sale apply to all transactions concluded between AUTOCLIMA and the Buyer without the need for an express reference to them or a specific agreement to this effect at the conclusion of each individual transaction. Any different condition or term applies only if confirmed in writing by AUTOCLIMA;
 (c) AUTOCLIMA reserves the right to modify, integrate or vary the General Conditions of Sale, attaching such variations to the offers or to any correspondence sent in writing to the Buyer. Such variations will be considered as accepted by the Buyer, after 30 (thirty) days from the date of receipt, without prejudice to the Buyer's right to declare in writing to AUTOCLIMA, within such term, any intention not to accept them.

2. ORDERS:

(a) All orders must be sent in writing (e-mail, post).
 (b) AUTOCLIMA's offers are always to be considered subject to final reconfirmation by AUTOCLIMA, even after acceptance by the Buyer, in particular with reference to quantities, prices and delivery terms.
 (c) Orders placed by the Buyer are not considered accepted until they have been confirmed in writing by AUTOCLIMA. In the event that AUTOCLIMA does not provide written confirmation of an order negotiated verbally, the issuing of the invoice by AUTOCLIMA or the execution of the order by AUTOCLIMA will be considered as confirmation.
 (d) Orders and/or changes to orders placed verbally or by telephone must be confirmed in writing by the Buyer. Otherwise AUTOCLIMA assumes no responsibility for any errors or possible misunderstandings.

3. PRICES:

unless otherwise agreed, orders will be processed according to the prices in force on their date of issue. The prices in the AUTOCLIMA price list are expressed in Euros (€) and are net of VAT and installation and replace and cancel all previous ones, together with any other previous communication in this regard. AUTOCLIMA reserves the right to change the prices in its price list without prior notice. Packaging is included in the price.

4. DELIVERY TERMS

(a) Unless otherwise agreed in writing, any delivery term indicated is not binding for AUTOCLIMA. Unless otherwise agreed between the parties, the indicative delivery term is that specified in the order confirmation;
 (b) AUTOCLIMA reserves the right to make partial deliveries, invoicing the Buyer for the products delivered;
 (c) Any liability for delivery resulting from force majeure or other unforeseeable events not attributable to AUTOCLIMA, including, without limitation, strikes, natural disasters, wars, lockouts, provisions of the public administration, subsequent blocks on export or import possibilities, in consideration of their duration and scope, release AUTOCLIMA from the obligation to respect any agreed delivery deadline;
 (d) AUTOCLIMA is not obliged to accept returns of products, unless expressly agreed in writing. Any costs incurred for this purpose are borne by the Buyer.

5. RETURNS:

all material is returned FCA Cambiano (TO). The goods travel at the buyer's risk. Faults, shortages or damages occurring during transport must be contested to the courier.

6. RETURNS OF GOODS:

returns of goods due to order cancellations or errors in the formulation of the order will be subject to prior written authorization by AUTOCLIMA. In any case, the material must be returned carriage paid and completely intact in all its parts. In addition, a flat rate reduction of 20% of the credit will be applied to cover the costs of management, control and restocking. In any case, returns of material are not permitted without written authorization by AUTOCLIMA SPA.

7. CONFIDENTIALITY:

the Buyer undertakes not to disclose or use, in ways other than those provided for by the contractual obligations, the commercial, corporate and technical data and information of which he may become aware during the execution of the contract itself.

8. PAYMENT:

Until full payment, the goods will remain the property of AUTOCLIMA SPA (without prejudice to the transfer of any risk relating to the same to the buyer). Any delay in payment will automatically generate the suspension of deliveries and any other service or provision in progress. Without prejudice to the legal actions that AUTOCLIMA intends to pursue, interest will also be applied equal to the discount rate published from time to time by the Bank of Italy, plus a penalty of 2% monthly, on the amount of the value due, calculated from the due date to the date of actual payment.

9. DUTY OF INSPECTION AND ACCEPTANCE OF THE PRODUCTS:

(a) Upon taking delivery of the Products, the Buyer must immediately:
 (i) check the quantities and packaging of the Products and record any objections in the delivery note as well as accepting the goods from the courier "with reservation";
 (ii) carry out a conformity check of the Products with respect to what is indicated in the order confirmation and record any discrepancy in the delivery note.
 (b) In the event of a complaint of defects, the Buyer must comply with the following procedures and terms:
 (i) the communication must be made within no more than 2 (two) working days from the date of receipt of the Products by the Buyer. In the event that the complaint relates to a defect that, despite the initial inspection, has remained hidden, the complaint must be made as soon as possible by the end of the working day on which the defect was discovered and, in any case, no later than 8 (eight) working days from the date of receipt of the Products;
 (ii) the detailed communication must be sent in writing to AUTOCLIMA within the terms indicated above. Any communication made by telephone will not be accepted;
 (iii) the communication must clearly specify the type and amount of the alleged defects, photographs proving the damage and shipping documents;
 (iv) the Buyer agrees to make the disputed Products available free of charge, upon simple request by AUTOCLIMA, for inspection; such inspection will be carried out by AUTOCLIMA or by an expert appointed by AUTOCLIMA.
 (c) No objection regarding the quantities, quality, type and packaging of the Products may be made except through communication on the delivery note, in accordance with the procedure indicated above.
 (d) Any Product for which no objection has been raised in accordance with the procedures and terms indicated above is considered approved and accepted by the Buyer.

10. PROCESSING OF PERSONAL DATA:

The Buyer's personal data will be processed in accordance with the provisions of the European and Italian legislation on the processing of personal data (EU Reg. 679/2016; Legislative Decree 196/2003 and subsequent amendments). AUTOCLIMA informs the Buyer that AUTOCLIMA SpA is the data controller and that the Buyer's personal data are collected and processed exclusively for the execution of this agreement and the obligations established by law, by a European regulation or by other applicable legislation. The Buyer declares to have received from AUTOCLIMA, before the collection of personal data by the same, the information referred to in art. 13 of EU Regulation 679/2016 intended for customers.

11. WARRANTY:

The warranty period for our products is 24 months from the date of installation on the vehicle, proven by the Warranty Certificate duly completed in all its parts and in any case for a maximum period of 27 months from the date of delivery of the same by Autoclimate S.p.A. with a limit of 100,000 km travelled (or 1600 hours of operation). In the event that the Buyer is a private consumer, the warranty period will last 24 months from the date of installation on the vehicle, and in any case for a maximum period of 27 months from the date of delivery of the same by Autoclimate S.p.A. Each A/C system component installed separately from other AUTOCLIMA products will not benefit from any Warranty. The air conditioners and refrigerators produced by AUTOCLIMA are exclusively intended for the conditioning of spaces occupied by people and the refrigeration of foodstuffs respectively. Any other use or application not expressly authorised in writing by AUTOCLIMA will void the warranty and release AUTOCLIMA from any liability for damage to people, animals or things. AUTOCLIMA will not be liable for defects in the products that are not covered by the legal guarantee of conformity, such as damage caused by normal wear and tear, accidents or unauthorised modifications. The Warranty is made operational only on interventions carried out by AUTOCLIMA Authorised Service Points. The validity of the Warranty ceases when the defect is attributable to incorrect installation, non-compliant use, lack of maintenance and for all transformations, modifications or interventions not authorised by AUTOCLIMA or not carried out by our Authorised Service Points. Consumable materials subject to natural wear and tear such as, for example, belts, filters, refrigerant, etc. are not covered by the warranty. For further details, refer to the "International Warranty Procedure".

12. USE OF THE BRAND:

the name, brand and logos representing AUTOCLIMA belong to the latter and cannot be used by the Buyer unless expressly authorised. The use of the trademark, logo and other distinctive signs of the company is permitted only with prior written authorization. The use of the trademark in such a way as to damage the reputation of the company or confuse consumers is prohibited. The trademark is protected by intellectual property laws. Any unauthorized use will be prosecuted.

13. APPLICABLE LAW AND JURISDICTION:

These general conditions of sale are governed by Italian law. The court of Turin has jurisdiction over any dispute.

14. FINAL PROVISIONS:

(a) The invalidity in whole or in part of individual provisions of these General Conditions of Sale does not affect the validity of the remaining provisions.
 (b) These General Conditions of Sale are drawn up in two languages: Italian and English. In the event of doubts of interpretation, the Italian version will prevail. Pursuant to and for the purposes of Articles 1341 and 1342 of the Italian Civil Code, the Buyer specifically approves the provisions referred to below: Art. 1 (b) - Applicability of the general conditions of sale to all contracts; Art. 3 - Prices and payment terms; Art. 4 - Delivery terms; Art. 5 - Returns; Art. 8 - Payment; Art. 9 - Duty to inspect and accept products; Art. 11 - Warranty terms; Art. 12 - Use of the trademark; Art. 13 - Applicable law and competent court; Art. 14 Final provisions.

Index

Air Conditioning

Universal Evaporators

pag. 5

AIR CONDITIONING

AIR CONDITIONING

AIR CONDITIONING

AIR CONDITIONING

AIR CONDITIONING

AIR CONDITIONING

AIR CONDITIONING

AIR CONDITIONING

AIR CONDITIONING

CONDIZIONAMENTO



UNIVERSAL EVAPORATORS

UNIVERSAL

EVAPORATORS

UNIVERSAL

EVAPORATORS

UNIVERSAL

EVAPORATORS

UNIVERSAL

EVAPORATORS

Universal Evaporators



Accessory set for remote air distribution for E40
SUPER ALASKA

Cod. 69691010

NOTE:



Accessory set for remote air distribution for E40
SUPER ALASKA

Cod. 69691012

NOTE:

Universal Evaporators



Accessory set for remote air distribution for E40
SUPER ALASKA

Cod.	69691011
------	----------

NOTE:



Basic HVAC-Under roof standard HVAC unit.

Universal air conditioning for earthmoving, agricultural and special machines.

	12V	24V
Cod.	AOCF83ES	AOCF84ES
Product	SEA	SEA
Voltage	12V	24V

NOTE:

Universal Evaporators



Basic-Universal ceiling air conditioner

Universal air conditioner for earthmoving, agricultural and special machines.

	12V	24V
Cod.	AOFF83ES	AOFF84ES
Product	SEA	SEA
Voltage	12V	24V
Cooling capacity	6.8Kw	6.8Kw
Electric Absorption	15.5A	8.5A
Weigh	5kg	5kg
Air flow	690.m3/h	690.m3/h

NOTE:



Classic Standard under roof HVAC system.

Universal air conditioning for earthmoving, agricultural and special machines.

	12V	24V
Cod.	AOCF79ES	AOCF80ES
Product	SEA	SEA
Voltage	12V	24V

NOTE:

Universal Evaporators



Classic-Universal ceiling air conditioner

Universal air conditioner for earthmoving, agricultural and special machines.

	12V	24V
Cod.	A0FF79ES	A0FF80ES
Product	SEA	SEA
Voltage	12V	24V
Cooling capacity	6.8Kw	6.9Kw
Electric Absorption	8.5A	8.6A
Weigh	7kg	8kg
Air flow	690.m3/h	690.m3/h

NOTE:



Cover kit for E60 MISTRAL attic with brackets

Cod.	69691007
------	----------

NOTE:



Digital control unit kit for E75 / E85 / E90

	12 V	24 V
Cod.	80821103	80821210
Voltage	12 V	24 V

NOTE:



Distribution cover for EV 40/3 - 2 holes 60 mm diam.

Cod.	20270226
------	----------

NOTE:

Universal Evaporators



Distribution cover for EV 40/3 - 4 holes 45 mm diam.

Cod.	20270227
------	----------

NOTE:



E 40 SUPER ALASKA

	12 V	24 V
Cod.	20201435	20201436
Electric Absorption	12 A@12V	6 A@24V
Voltage	12 V	24 V
Weigh	5,5 Kg	5,5 Kg
Coolant	R134a	R134a
Cooling capacity	4,0 kW	4,0 kW
Controls	Manuals	Manuals
Air flow	450 m3/h	450 m3/h

NOTE: All evaporators can be integrated with saniclima

Universal Evaporators



E 40 SUPER ALASKA - hoses out-way on Right

	12 V	24 V
Cod.	20201467	20201468
Electric Absorption	12 A@12V	6 A@24V
Voltage	12 V	24 V
Weigh	5,5 Kg	5,5 Kg
Coolant	R134a	R134a
Controls	Manuali	Manuali
Air flow	450 m3/h	450 m3/h

NOTE: All evaporators can be integrated with saniclimate



E 40 SUPER ALASKA - w/o controls on front cover

	12 V
Cod.	20201523
Voltage	12 V
Weigh	5,5 Kg
Coolant	R134a
Cooling capacity	4,0 kW
Air flow	450 m3/h

NOTE: All evaporators can be integrated with saniclimate

Universal Evaporators



E 40 SUPER ALASKA – w/o front

	12 V	24 V
Cod.	20201507	20201561
Electric Absorption	12A 12V	6A 24v
Voltage	12 V	24 V
Weigh	5,5 Kg	5,5 Kg
Coolant	R134a	R134a
Cooling capacity	4,0 kW	4,0 kW
Controls	Manuals	Manuals
Air flow	450 m3/h	450 m3/h

NOTE: All evaporators can be integrated with saniclimate



E 40 SUPER ALASKA 12V – without controls on the front panel – with electrovalve

	12 V
Cod.	20201770
Electric Absorption	12 A
Voltage	12 V
Weigh	5,5 Kg
Coolant	R134a
Cooling capacity	4,0 kW
Air flow	450 m3/h

NOTE: All evaporators can be integrated with saniclimate

Universal Evaporators



E 40 SUPER ALASKA with digital control unit

12 V

Cod.	20201506	20201515
Electric Absorption	12A 12V	6A 24v
Voltage	12 V	
Weigh	5,5 Kg	5,5 Kg
Coolant	R134a	R134a
Cooling capacity	4,0 kW	4,0 kW
Controls	Digital	Digital
Air flow	450 m3/h	450 m3/h

NOTE: All evaporators can be integrated with saniclima



E 40 super Alaska with digital control unit – SX tube output

Evaporator for attic positioning with digital control unit. ON REQUEST.

Cod.	20201515
Electric Absorption	6A 24v
Weigh	5,5 Kg
Coolant	R134a
Cooling capacity	4,0 kW
Controls	Digital
Air flow	450 m3/h

NOTE:

Universal Evaporators



E 40 Super Alaska with manual controls - SX pipe outlet - with electro valve

Cod.	20201750
Electric Absorption	12A 12V
Weigh	5,5 Kg
Coolant	R134a
Cooling capacity	4,0 kW
Controls	Manuals
Air flow	450 m3/h

NOTE:



E 50

	12 V	24 V
Cod.	—	20201827
Electric Absorption	13 A@12V	7A 24V
Voltage	12 V	24 V
Weigh	5,4 Kg	5,4 Kg
Coolant	R134a	R134a
Cooling capacity	5,3 kW	5,3 kW
Controls	Remote manual controls	Remote manual controls
Air flow	550 m3/h	550 m3/h

NOTE: All evaporators can be integrated with saniclimate

Universal Evaporators



E 50

	12 V	24 V
Cod.	—	20201829
Electric Absorption	13A 12V	7A 24V
Voltage	12 V	24 V
Weigh	5,4 Kg	5,4 Kg
Coolant	R134a	R134a
Cooling capacity	5 kW	5 kW
Controls	Remote manual controls	Remote manual controls
Air flow	500 m3/h	500 m3/h
Heating capacity	4,5 kW	4,5 kW

NOTE: All evaporators can be integrated with saniclimate



E 60 BERING - dual direction

	12 V
Cod.	20201725
Electric Absorption	16 A
Voltage	12 V
Weigh	6 Kg
Coolant	R134a
Cooling capacity	6 kW
Controls	Manuals
Air flow	600 m3/h

NOTE: All evaporators can be integrated with saniclimate

Universal Evaporators



E 60 MISTRAL

	12 V	24 V
Cod.	20201398	20201399
Electric Absorption	16 A	8 A
Voltage	12 V	24 V
Weigh	5,5 Kg	5,5 Kg
Coolant	R134a	R134a
Cooling capacity	6,5 kW	6,5 kW
Controls	Manuals	Manuals
Air flow	650 m3/h	650 m3/h

NOTE: All evaporators can be integrated with saniclimate



E 60 MISTRAL - 12V - ohne Frontpanel - ohne Kontrollen, mit Thermostat

	12 V	24 V
Cod.	20201408	20201481
Electric Absorption	16 A	8 A
Voltage	12 V	24 V
Weigh	5,5 Kg	5,5 Kg
Coolant	R134a	R134a
Cooling capacity	6,5 kW	6,5 kW
Air flow	650 m3/h	650 m3/h

NOTE: All evaporators can be integrated with saniclimate

Universal Evaporators



E 60 MISTRAL – fittings outlet on RH side - w/o front

	12 V
Cod.	20201409
Electric Absorption	16 A
Voltage	12 V
Weigh	5,5 Kg
Coolant	R134a
Cooling capacity	6,5 kW
Air flow	650 m3/h

NOTE: All evaporators can be integrated with saniclima



E 60 MISTRAL – with digital control unit

	12 V	24 V
Cod.	20201423	20201424
Electric Absorption	16 A	8 A
Voltage	12 V	24 V
Weigh	5,5 Kg	5,5 Kg
Coolant	R134a	R134a
Cooling capacity	6,5 kW	6,5 kW
Controls	Digital	Digital
Air flow	650 m3/h	650 m3/h

NOTE: All evaporators can be integrated with saniclima

Universal Evaporators



E 60 MISTRAL - WITH DIGITAL CONTROL UNIT

Compact evaporator for attic positioning with digital control unit on the front. ON REQUEST.

	24 V	12 V
Cod.	20201424	20201423
Electric Absorption	8 A	16 A
Voltage	24 V	12 V
Weigh	5,5 Kg	5,5 Kg
Coolant	R134a	R134a
Cooling capacity	6,5 kW	
Controls	Digital	Digital
Air flow	650 m3/h	650 m3/h

NOTE:



E 60/2 MISTRAL2 12V - without controls on the front panel - with electrovalve

	12 V
Cod.	20201776
Electric Absorption	16 A
Voltage	12 V
Weigh	5,5 Kg
Coolant	R134a
Cooling capacity	6,5 kW
Air flow	650 m3/h

NOTE: All evaporators can be integrated with saniclima

Universal Evaporators



E 75 LONG RUN 3

	12 V	24 V
Cod.	20201472	20201473
Electric Absorption	20 A	10 A
Voltage	12 V	24 V
Weigh	13 Kg	13 Kg
Coolant	R134a	R134a
Cooling capacity	7,5 kW	7,5 kW
Air flow	850 m3/h	850 m3/h

NOTE: All evaporators can be integrated with saniclima



E 75 LONG RUN 3 - dual direction

	12 V
Cod.	20201607
Electric Absorption	20 A
Voltage	12 V
Weigh	13 Kg
Coolant	R134a
Cooling capacity	7,5 kW
Controls	Manuals
Air flow	850 m3/h

NOTE: All evaporators can be integrated with saniclima

Universal Evaporators



E 75/2 LONGRUN3 - without controls on the front panel - with electrovalve

	12 V
Cod.	20201774
Electric Absorption	20 A
Voltage	12 V
Weigh	11 Kg
Coolant	R134a
Cooling capacity	7,5 kW
Air flow	850 m3/h

NOTE: All evaporators can be integrated with saniclima



E 85 PARIS 80

	12 V	24 V
Cod.	20201150/1	20201173
Electric Absorption	36,5 A	19,5 A
Voltage	12 V	24 V
Weigh	15,5 Kg	15,5 Kg
Coolant	R134a	R134a
Cooling capacity	8,5 kW	8,5 kW
Air flow	1350 m3/h	1350 m3/h

NOTE:

Universal Evaporators



E 90

	12 V
Cod.	20201602
Electric Absorption	20 A
Voltage	12 V
Weigh	13 Kg
Coolant	R134a
Cooling capacity	9,0 kW
Air flow	900 m3/h

NOTE: All evaporators can be integrated with saniclima



E 90

	12 V	24 V
Cod.	20201613	20201614
Electric Absorption	20 A	10 A
Voltage	12 V	24 V
Weigh	13 Kg	13 Kg
Coolant	R134a	R134a
Cooling capacity	9,0 kW	9,0 kW
Controls	Manuals	Manuals
Air flow	900 m3/h	900 m3/h

NOTE: All evaporators can be integrated with saniclima

Universal Evaporators



E 90 - 12V - DX

	12 V
Cod.	20201612.1
Electric Absorption	20 A
Voltage	12 V
Weigh	13 Kg
Coolant	R134a
Cooling capacity	9,0 kW
Air flow	900 m3/h

NOTE: All evaporators can be integrated with saniclimate



E Fighet-Universal Air Conditioner

Universal air conditioning for earthmoving, agricultural and special machines.

	12V	24V
Cod.	AOCF00154-00	AOCF00155-00
Product	SEA	SEA
Voltage	12V	24V
Cooling capacity	5.5Kw	5.5Kw
Heating capacity	4.5Kw	4.5Kw
Electric Absorption	14A	7A
Weigh	4kg	4kg
Air flow	600 m3/h	600 m3/h

NOTE:

Universal Evaporators



E Fighèt-Universal conditioner

Universal air conditioner for earthmoving, agricultural and special machines.

	12V	24V
Cod.	A0FF00154-00	A0FF00155-00
Product	SEA	SEA
Voltage	12V	24V
Cooling capacity	5.5Kw	5.5Kw
Electric Absorption	14A	7A
Weigh	3.8kg	3.8kg
Air flow	600 m3/h	600 m3/h

NOTE:



EH 40 ELECSTA

	12 V	24 V
Cod.	20201443	20201444
Electric Absorption	9A 12V	5,5A 24V
Voltage	12 V	24 V
Weigh	5,5 Kg	5,5 Kg
Coolant	R134a	R134a
Cooling capacity	4,0 kW	4,0 kW
Controls	Manuals	Manuals
Heating capacity	5,5 kW	5,5 kW
Air flow	420 m3/h	420 m3/h

NOTE: All evaporators can be integrated with saniclimate

Universal Evaporators



EH 40 ELECSTA - special front cover

	12 V
Cod.	20201503
Electric Absorption	9,5 A@12V
Voltage	12 V
Weigh	5,5 Kg
Coolant	R134a
Cooling capacity	4,0 kW
Heating capacity	5,5 kW
Air flow	420 m3/h

NOTE: All evaporators can be integrated with saniclima



EH 40 ELECSTA - w/o front cover

	12 V	24 V
Cod.	20201530	20201470
Electric Absorption	9,5A 12V	5,5A 24V
Voltage	12 V	24 V
Weigh	5,5 Kg	5,5 Kg
Coolant	R134a	R134a
Cooling capacity	4,0 kW	4,0 kW
Heating capacity	5,5 kW	5,5 kW
Air flow	420 m3/h	420 m3/h

NOTE: All evaporators can be integrated with saniclima

Universal Evaporators



EH 40 ELECSTA 12V - without controls on the front panel - with electrovalve

12 V	
Cod.	20201773
Electric Absorption	9,5 A@12V
Voltage	12 V
Weigh	5,5 Kg
Coolant	R134a
Cooling capacity	4,0 kW
Heating capacity	5,5 kW
Air flow	420 m3/h

NOTE: All evaporators can be integrated with saniclima



EH 60 DD BERING - BIDIRECTIONAL

Compact evaporator for attic positioning with air diffusion in the cabin and in the rear compartment (bidirectional).ON REQUEST.

12 V	
Cod.	20201727
Electric Absorption	16 A
Voltage	12 V
Weigh	6kg
Coolant	R134a
Cooling capacity	5,5 kW
Controls	Manuals
Air flow	550 m3/h
Heating capacity	5,5 kW

NOTE:

Universal Evaporators



EH 60 MISTRAL

	12 V	24 V
Cod.	20201400	20201401
Electric Absorption	16 A	8A
Voltage	12 V	24 V
Weigh	5,5 Kg	5,5 Kg
Coolant	R134a	R134a
Cooling capacity	6,0 kW	6,0 kW
Controls	Manuals	Manuals
Heating capacity	5,5 kW	5,5 kW
Air flow	600 m3/h	600 m3/h

NOTE: All evaporators can be integrated with saniclima



EH 60 MISTRAL – hoses outlet on RH

	12 V
Cod.	20201484
Electric Absorption	16 A
Voltage	12 V
Weigh	5,5 Kg
Coolant	R134a
Cooling capacity	6,0 kW
Controls	Manuals
Heating capacity	5,5 kW
Air flow	600 m3/h

NOTE: All evaporators can be integrated with saniclima

Universal Evaporators



**EH 60 MISTRAL - w/o front panel - w/o controls,
with pressure switch**

12 V

Cod.	20201440
Electric Absorption	16 A
Voltage	12 V
Weigh	5,5 Kg
Coolant	R134a
Cooling capacity	6,0 kW
Heating capacity	5,5 kW
Air flow	600 m3/h

NOTE: All evaporators can be integrated with saniclimate



EH 60 MISTRAL - with digital control unit

12 V

Cod.	20201426
Electric Absorption	16 A
Voltage	12 V
Weigh	5,5 Kg
Coolant	R134a
Cooling capacity	6,0 kW
Controls	Digital
Heating capacity	5,5 kW
Air flow	600 m3/h

NOTE: All evaporators can be integrated with saniclimate

Universal Evaporators



EH 60/2 MISTRAL2 12V – without controls on the front panel – with electrovalve

	12 V
Cod.	20201777
Electric Absorption	16 A
Voltage	12 V
Weigh	5,5 Kg
Coolant	R134a
Cooling capacity	6 kW
Heating capacity	5,5 kW
Air flow	600 m3/h

NOTE: All evaporators can be integrated with saniclima



EH 75 LONG RUN 3

	12 V	24 V
Cod.	20201474	20201475
Electric Absorption	20 A	10 A
Voltage	12 V	24 V
Weigh	13 Kg	13 Kg
Coolant	R134a	R134a
Cooling capacity	7,5 kW	7,5 kW
Heating capacity	7,5 kW	7,5 kW
Air flow	850 m3/h	850 m3/h

NOTE: All evaporators can be integrated with saniclima

Universal Evaporators



EH 75/2 LONGRUN3 – without controls at the front
– with solenoid valve

Evaporator/heater for unidirectional attic positioning. Complete with front, without controls, with integrated solenoid valve.

	12 V
Cod.	20201775
Electric Absorption	20 A
Voltage	12 V
Weigh	11 Kg
Coolant	R134a
Cooling capacity	7,5 kW
Air flow	850 m3/h

NOTE: All evaporators can be integrated with saniclima



EV 40/1 VERTICAL HEAVY DUTY – wall mounted

	12 V	24 V
Cod.	2020189132	2020189133
Electric Absorption	13A 12V	6,5 A
Voltage	12 V	24 V
Weigh	14 Kg	14 Kg
Coolant	R134a	R134a
Cooling capacity	4,0 kW	4,0 kW
Air flow	450 m3/h	450 m3/h

NOTE: All evaporators can be integrated with saniclima

Universal Evaporators



EV 40/3 VERTICAL - wall mounted

	12 V	24 V
Cod.	20201540	20201541
Electric Absorption	13A 12V	7 A@24 V
Voltage	12 V	24 V
Weigh	7 Kg	7 Kg
Coolant	R134a	R134a
Cooling capacity	4,6 kW	4,6 kW
Controls	Manuals	Manuals
Air flow	530 m3/h	530 m3/h

NOTE: All evaporators can be integrated with saniclimate



EV 40/3 VERTICAL - wall mounted without controls

Compact evaporator for vertical positioning on the floor and against a wall, without controls. Colour grey.

	12 V	24 V
Cod.	-	20201541
Electric Absorption	13A 12V	7 A@24 V
Voltage	12 V	24 V
Weigh	7 Kg	7 Kg
Coolant	R134a	R134a
Cooling capacity	4,6 kW	4,6 kW
Air flow	530 m3/h	530 m3/h

NOTE: All evaporators can be integrated with saniclimate

Universal Evaporators



EV 70 VERTICAL

	12 V	24 V
Cod.	20201279	20201280
Electric Absorption	22 A	11 A
Voltage	12 V	24 V
Weigh	18 Kg	18 Kg
Coolant	R134a	R134a
Cooling capacity	7,0 kW	7,0 kW
Controls	Manuals	Manuals
Air flow	800 m3/h	800 m3/h

NOTE: All evaporators can be integrated with saniclima



EV40/3 VERTICAL3 - wall mounting - White

	12 V	24 V
Cod.	20201702	20201703
Electric Absorption	13A 12V	7A 24V
Voltage	12 V	24 V
Weigh	7 Kg	7 Kg
Coolant	R134a	R134a
Cooling capacity	4,6 kW	4,6 kW
Controls	Manuals	Manuals
Air flow	530 m3/h	530 m3/h

NOTE: All evaporators can be integrated with saniclima

Universal Evaporators



EV40/3 VERTICAL3 12V - central

	12 V	24 V
Cod.	20201707	20201708
Electric Absorption	11A 12V	5,5A
Voltage	12 V	24 V
Weigh	7 Kg	7 Kg
Coolant	R134a	R134a
Cooling capacity	4,0 kW	4,0 kW
Controls	Manuals	Manuals
Air flow	530 m3/h	530 m3/h

NOTE: All evaporators can be integrated with saniclima



Evaporator ED65 DX 12V

Compact evaporator for attic positioning, With manual controls at the front.

	12 V	24 V
Cod.	20201652MG	20201399
Electric Absorption	16 A	8 A
Voltage	12 V	24 V
Weigh	5,5 Kg	5,5 Kg
Coolant	R134a	R134a
Cooling capacity	6 kW	6,5 kW
Air flow	650 m3/h	650 m3/h

NOTE: All evaporators can be integrated with saniclima

Universal Evaporators



Evaporator ED65 SX 12V

Compact evaporator for attic positioning, With manual controls at the front.

	12 V	24 V
Cod.	20201651MG	20201399
Electric Absorption	16 A	8 A
Voltage	12 V	24 V
Weigh	5,5 Kg	5,5 Kg
Coolant	R134a	R134a
Cooling capacity	6 kW	6,5 kW
Air flow	650 m3/h	650 m3/h

NOTE: All evaporators can be integrated with saniclima



EVH 40/1 VERTICAL HEAVY DUTY - wall mounted

	12 V	24 V
Cod.	2020189134	2020189135
Electric Absorption	13A 12V	6,5 A
Voltage	12 V	24 V
Weigh	14 Kg	14 Kg
Coolant	R134a	R134a
Cooling capacity	4,0 kW	4,0 kW
Heating capacity	3,5 kW	3,5 kW
Air flow	450 m3/h	450 m3/h

NOTE: All evaporators can be integrated with saniclima

Universal Evaporators



EVH 40/3 VERTICAL - wall mounted

	12 V	24 V
Cod.	20201542	20201543
Electric Absorption	13A 12V	7A 24V
Voltage	12 V	24 V
Weigh	7,5 kg	7,5 kg
Coolant	R134a	R134a
Cooling capacity	4,3 kW	4,3 kW
Controls	Manuals	Manuals
Heating capacity	4,5 kW	4,5 kW
Air flow	450 m3/h	450 m3/h

NOTE: All evaporators can be integrated with saniclima



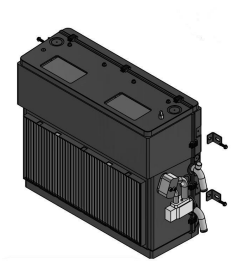
EVH 40/3 VERTICAL - wall mounted without controls

Compact evaporator for vertical positioning on the floor and against a wall, without controls. Colour grey.

	12 V	24 V
Cod.	-	20201541
Electric Absorption	13A 12V	7 A@24 V
Voltage	12 V	24 V
Weigh	7 Kg	7 Kg
Coolant	R134a	R134a
Cooling capacity	4,6 kW	4,6 kW
Air flow	450 m3/h	530 m3/h
Heating capacity	4,5 kW	

NOTE: All evaporators can be integrated with saniclima

Universal Evaporators



EVH 70 EVO VERTICAL - without headphones

Evaporator/heater for vertical positioning on the floor and wall.

12 V

Cod.	20201849
Electric Absorption	22 A
Voltage	12 V
Weigh	18 Kg
Coolant	R134a
Cooling capacity	7,0 kW
Controls	Manuals
Heating capacity	8 kW
Air flow	1000 m3/h

NOTE: All evaporators can be integrated with saniclima



EVH 70 EVO VERTICAL with solenoid - without cap

Evaporator/heater for vertical positioning on the floor and wall.

12 V

Cod.	20201852
Electric Absorption	22 A
Voltage	12 V
Weigh	18 Kg
Coolant	R134a
Cooling capacity	7,0 kW
Controls	Manuals
Heating capacity	8 kW
Air flow	1000 m3/h

NOTE: All evaporators can be integrated with saniclima

Universal Evaporators



EVH 70 VERTICAL

	12 V
Cod.	20201281
Electric Absorption	22 A
Voltage	12 V
Weigh	18 Kg
Coolant	R134a
Cooling capacity	7,0 kW
Controls	Manuals
Heating capacity	6,5 kW
Air flow	750 m3/h

NOTE: All evaporators can be integrated with saniclima



EVH40/3 VERTICAL3 C/F 12V - central

	12 V	24 V
Cod.	20201709	20201710
Electric Absorption	11 A	5,5A
Voltage	12 V	24 V
Weigh	7,5 kg	7,5 kg
Coolant	R134a	R134a
Cooling capacity	4,3 kW	4,3 kW
Controls	Manuals	Manuals
Heating capacity	4,5 kW	4,5 kW
Air flow	450 m3/h	450 m3/h

NOTE: All evaporators can be integrated with saniclima

Universal Evaporators



Frame front for E40 SUPER ALASKA / EH40
ELECSTA

Cod. 20270203

NOTE:



Frame front for E40 SUPER ALASKA / EH40
ELECSTA

Cod. 20270203.1

NOTE:

Universal Evaporators



Front frame kit for E60 MISTRAL with 4 mouths

Cod. 20270204

NOTE:



Front kit for E75 / E90

Cod. 202901359

NOTE:

Universal Evaporators



Geval Do-Universal Air Conditioner

Universal air conditioning for earthmoving, agricultural and special machines.

	12V	24V
Cod.	AOCF52ES	AOCF53ES
Product	SEA	SEA
Voltage	12V	24V
Cooling capacity	9.8Kw	9.8Kw
Heating capacity	10Kw	10Kw
Electric Absorption	26.4A	9.1A
Air flow	910.m3/h	970.m3/h

NOTE:



Giazz-Universal air conditioner

Universal air conditioner for earthmoving, agricultural and special machines.

	12V	24V
Cod.	AOFF005ES	AOFF006ES
Product	SEA	SEA
Voltage	12V	24V
Cooling capacity	9.54Kw	9.54Kw
Electric Absorption	21A	1,2A
Air flow	1080 m3/h	1100.m3/h

NOTE:



Headset for VERTICAL HD for two side mounting

Cod. 2027082278

NOTE:



Headset for VERTICAL HD for wall mounting

Cod. 2027082107.2

NOTE:

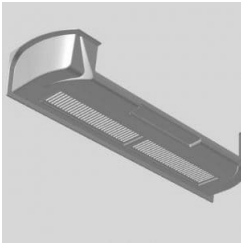
Universal Evaporators



HVAC-High performance HVAC system.
Universal air conditioning for earthmoving, agricultural and special machines.

	12V	24V
Cod.	AOCF55ES	AOCF56ES
Product	SEA	SEA
Voltage	12V	24V

NOTE:



Kit roof covering x E75 - EH75 - E90
Evaporator bottom cover

Cod.	202901636.1
------	-------------

NOTE:

Universal Evaporators



Large Vertical-Universal Vertical Air Conditioner

Universal air conditioner for earthmoving, agricultural and special machines.

	12V	24V
Cod.	A0FF00114-00	A0FF00115-00
Product	SEA	SEA
Voltage	12V	24V
Cooling capacity	8KW	8KW
Electric Absorption	15A	8A
Weigh	9kg	9kg
Air flow	750 m3/h	750 m3/h

NOTE:



London V-Vertical universal air conditioner

Universal air conditioning for earthmoving, agricultural and special machines.

	12V	24V
Cod.	A0CF44ES	A0CF45ES
Product	SEA	SEA
Voltage	12V	24V
Cooling capacity	9.5Kw	9.5Kw
Heating capacity	8Kw	8Kw
Electric Absorption	25.3A	1,2A
Weigh	5.8kg	5.8kg
Air flow	1080 m3/h	1100.m3/h

NOTE:

Universal Evaporators



London-Universal air conditioning

Universal air conditioning for earthmoving, agricultural and special machines.

	12V	24V
Cod.	AOCF46ES	AOCF47ES
Product	SEA	SEA
Voltage	12V	24V
Cooling capacity	9Kw	9Kw
Heating capacity	9Kw	9Kw
Electric Absorption	21A	1,2A
Weigh	5.8kg	5.8kg
Air flow	1080 m3/h	1100.m3/h

NOTE:



Maxxum-Universal air conditioner

Universal air conditioner for earthmoving, agricultural and special machines.

	12V	24V
Cod.	AOFF144ES-00	AOFF145ES-00
Product	SEA	SEA
Voltage	12V	24V
Cooling capacity	15Kw	15Kw
Electric Absorption	2x14A	2x7A
Weigh	-	-
Air flow	2x800.m3/h	2x800.m3/h

NOTE:

Universal Evaporators



Maxxum-Universal air conditioner

Universal air conditioning for earthmoving, agricultural and special machines.

	12V	24V
Cod.	AOCF144ES-00	AOCF145ES-00
Product	SEA	SEA
Voltage	12V	24V
Cooling capacity	15Kw	15Kw
Heating capacity	14Kw	14Kw
Electric Absorption	2x14.1A	2x7.1A
Weigh	-kg	
Air flow	2x800.m3/h	2x790.m3/h

NOTE:



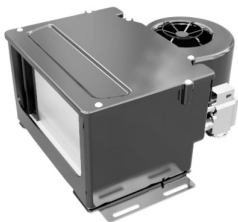
Medium vertical-Universal vertical air conditioner

Universal air conditioner for earthmoving, agricultural and special machines.

	12V	24V
Cod.	AOFF30ES	AOFF31ES
Product	SEA	SEA
Voltage	12V	24V
Cooling capacity	7.3Kw	7.3Kw
Electric Absorption	8A	8A
Weigh	8.8kg	8.8kg
Air flow	630.m3/h	630.m3/h

NOTE:

Universal Evaporators



Midi-Universal air conditioner

Universal air conditioner for earthmoving, agricultural and special machines.

	12V	24V
Cod.	AOFF142ES	AOFF143ES
Product	SEA	SEA
Voltage	12V	24V
Cooling capacity	6.5Kw	6.5Kw
Electric Absorption	1,2A	7A
Weigh	5.4kg	5.4kg
Air flow	480.m3/h	480.m3/h

NOTE:



Midi-Universal air conditioner

Universal air conditioning for earthmoving, agricultural and special machines.

	12V	24V
Cod.	AOCF142ES-00	AOCF143ES-00
Product	SEA	SEA
Voltage	12V	24V
Cooling capacity	6.5Kw	6.5Kw
Heating capacity	5.6Kw	5.6Kw
Electric Absorption	19.6A	10.4A
Weigh	5.4kg	5.4kg
Air flow	540.m3/h	560.m3/h

NOTE:

Universal Evaporators



Ravena-Universal air conditioner

Universal air conditioner for earthmoving, agricultural and special machines.

	12V	24V
Cod.	AOFF74ES	AOFF75ES
Product	SEA	SEA
Voltage	12V	24V
Cooling capacity	8.7Kw	8.7Kw
Electric Absorption	18A	10A
Weigh	5kg	5kg
Air flow	800 m3/h	800 m3/h

NOTE:



Ravena-Universal air conditioner

Universal air conditioning for earthmoving, agricultural and special machines.

	12V	24V
Cod.	AOCF74ES	AOCF75ES
Product	SEA	SEA
Voltage	12V	24V
Cooling capacity	8.7Kw	8.7Kw
Heating capacity	7Kw	7Kw
Electric Absorption	21A	1,2A
Weigh	5.8kg	5.8kg
Air flow	1080 m3/h	1100.m3/h

NOTE:

Universal Evaporators



RE 50 - Evaporator without air diffuser

	12 V
Cod.	20201392
Electric Absorption	9 A
Voltage	12 V
Weigh	7.5 V
Coolant	R134a
Cooling capacity	5,3 kW
Controls	Remote manual controls
Air flow	500 m3/h

NOTE: All evaporators can be integrated with saniclima



RE 50 Evaporator

	12 V	24 V
Cod.	20201369	20201370
Electric Absorption	9 A@12 V	5 A
Voltage	12 V	24 V
Weigh	7,6 Kg	7,6 Kg
Coolant	R134a	R134a
Cooling capacity	5,0 kW	5,0 kW
Controls	Manuals	Manuals
Air flow	500 m3/h	500 m3/h

NOTE: All evaporators can be integrated with saniclima

Universal Evaporators



REH 50

12 V

Cod.	20201378
Electric Absorption	9 A@12 V
Voltage	12 V
Weigh	7,6 Kg
Coolant	R134a
Cooling capacity	4,5 kW
Controls	Manuals
Heating capacity	5,5 kW
Air flow	460 m3/h

NOTE: All evaporators can be integrated with saniclima



Remote air distribution accessory kit for E60 MISTRAL

Cod.	69691013
------	----------

NOTE:



Remote air distribution accessory kit for E60 MISTRAL

Cod. 69691014

NOTE:



Roof cover kit x E40 SUPER ALASKA / EH40 ELECSTA

Cod. 69691008

NOTE:

Universal Evaporators



Sburon-Universal air conditioner

Universal air conditioning for earthmoving, agricultural and special machines.

	12V	24V
Cod.	AOCF00201ES	AOCF00202ES
Product	SEA	SEA
Voltage	12V	24V
Cooling capacity	8.5Kw	8.5Kw
Heating capacity	7.5Kw	7.5Kw
Electric Absorption	15A	8A
Weigh	9.8kg	9.8kg
Air flow	750 m3/h	750 m3/h

NOTE:



Sciadur-Universal air conditioner

Universal air conditioning for earthmoving, agricultural and special machines.

	12V	24V
Cod.	AOCF102ES	AOCF103ES
Product	SEA	SEA
Voltage	12V	24V
Cooling capacity	8.5Kw	8.5Kw
Heating capacity	9Kw	9Kw
Electric Absorption	28.2A	14.1A

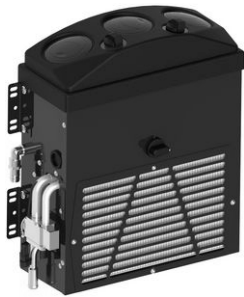
NOTE:



Standard Frigoclic mounting set for AC extensions

	12 V - 24 V
Cod.	60600882
Voltage	12 V - 24 V

NOTE:



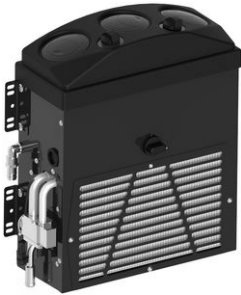
Vertical large-Universal air conditioner

Universal air conditioner for earthmoving, agricultural and special machines.

	12V	24V
Cod.	AOFF14ES	AOFF15ES
Product	SEA	SEA
Voltage	12V	24V
Cooling capacity	8.3Kw	8.3Kw
Electric Absorption	15.2A	8.5A
Weigh	9kg	9kg
Air flow	680.m3/h	680.m3/h

NOTE:

Universal Evaporators



Vertical large-Universal vertical air conditioner

Universal air conditioning for earthmoving, agricultural and special machines.

	12V	24V
Cod.	AOCF00127-00	AOCF00128-00
Product	SEA	SEA
Voltage	12V	24V
Cooling capacity	8KW	8KW
Heating capacity	6Kw	6Kw
Electric Absorption	15A	8A
Weigh	9.8kg	9.8kg
Air flow	750 m3/h	750 m3/h

NOTE:



Vertical medium-Universal vertical air conditioner

Universal air conditioning for earthmoving, agricultural and special machines.

	12V	24V
Cod.	AOCF64ES	AOCF65ES
Product	SEA	SEA
Voltage	12V	24V
Cooling capacity	7.8Kw	7.8Kw
Heating capacity	5.6Kw	5.6Kw
Electric Absorption	15.1A	5.7A
Weigh	9.8kg	9.8kg
Air flow	690.m3/h	400.m3/h

NOTE:

Universal Evaporators



Vertical small-Universal vertical air conditioner

Universal air conditioner for earthmoving, agricultural and special machines.

	12V	24V
Cod.	AOFF16ES	AOFF17ES
Product	SEA	SEA
Voltage	12V	24V
Cooling capacity	6Kw	6Kw
Electric Absorption	1,2A	8A
Weigh	7.8kg	7.8kg
Air flow	450 m3/h	450 m3/h

NOTE:



Vertical small-wall mounted HVAC unit.

Universal air conditioning for earthmoving, agricultural and special machines.

	12V	24V
Cod.	AOCF34ES	AOCF35ES
Product	SEA	SEA
Voltage	12V	24V

NOTE:

Universal Evaporators



Vicheng-Universal air conditioner

Universal air conditioner for earthmoving, agricultural and special machines.

	12V
Cod.	A0FF00140ES
Product	SEA
Voltage	12V
Cooling capacity	8KW
Electric Absorption	14.1A
Air flow	800 m3/h

NOTE:



Vicheng-Universal air conditioner

Universal air conditioning for earthmoving, agricultural and special machines.

	12V	24V
Cod.	A0CF00140ES	A0CF00141ES
Product	SEA	SEA
Voltage	12V	24V
Cooling capacity	8KW	8KW
Heating capacity	8Kw	8Kw
Electric Absorption	14.1A	7.1A
Weigh	5.3kg	5.3kg
Air flow	800 m3/h	790.m3/h

NOTE:

THE REFRIGERATION BY AUTOCLIMA

HEADQUARTERS AND SUBSIDIARIES

SEDE DI CAMBIANO
Via Cavalieri di Vittorio
Veneto, 15
10020 Cambiano (TO)
Tel. +39 011 9443210
Fax +39 011 9443230
sales@autoclima.com

Autoclima Deutschland
Gustav-Heinemann-Straße 7
64572 Klein-Gerau Deutschland
Tel: +49 (6152) 187799 - 0
Fax: +49 (6152) 187799 - 9
info@autoclima.de

Autoclima Iberica
Oficinas: C/ Vapor, 1
Almacén: C/ Indústria, 11
08760 Martorell
Barcelona
Tel: +34 931 220 235
comercial@autoclima.com

Autoclima Polska
Szkolna 11
62-026 Gadki
Poland
Tel: +49 600751354
info@autoclima.pl

Autoclima Russia
143441, Moscow region,
Krasnogorsky district,
BP Greenwood,
bld 1, office 212
Tel +7 (495) 150-75-90
info@autoclima.ru

ELECTRIC STATION CLIMATISATION
ZA des Perriers
78500 Sartrouville - France
T. +33 (1) 61.04.41.41
Fax +33 (1) 39.57.44.21
esc@esc-clim.com - shop.autoclima.com

SEA S.R.L.
Via L. Lama, 8 - 48026
Russi RA (Italia)
Tel. +39 0544 582436
+39 0544 583794
info@sea-italia.com

DEPOSITI ITALIA

Deposito Roma
Via Lucio Mariani, 59
00178 Roma - Italy
Tel. +39 06 32091591
Fax +39 06 32091592
autoclimaroma@autoclima.com

Deposito Bologna
Via della Fisica, 5 - loc. Cicogna
40068 San Lazzaro di Savena (BO)
Tel. +39 051 6256786
Fax +39 051 6250676
autoclimabologna@autoclima.com

Deposito Firenze
Via Boccaccio, 8
50013 Campi Bisenzio (FI)
Tel: +39 055 0540846
Fax: +39 055 0540847
autoclimafirenze@autoclima.com

Deposito Calabria
Contrada Piano di Maio
87036 Rende (CS)
Tel. +39 0984 447251
Fax. +39 0984 446431
autoclimacalabria@autoclima.com

Deposito di Seregno (Lombardia)
Via Milano, 45
20831 Seregno (MB)
Tel: +39 0362 1860178
Fax: +39 0362 1860179
seregno@autoclima.com

Deposito di Padova
Via dell'Industria, 70
35129 Padova
Tel: +39 049 7160243
Fax: +39 049 7160244
padova@autoclima.com

Deposito di Catania
Via Gioacchino Russo, 15 / A
95100 Catania
Tel: +39 095 3800043
Fax: +39 095 3800044
catania@autoclima.com