

TAMANDUA

AIR PRESSURIZED AND FILTER



Part.

AA0012ES - (12v)

Filtro a Carboni / Carbon Filter

AA0013ES - (24v)

Filtro a Carboni / Carbon Filter

AA0014ES - (12v)

Filtro HEPA / HEPA Filter

AA0015ES - (24v)

Filtro HEPA / HEPA Filter

AA0016ES - (12v)

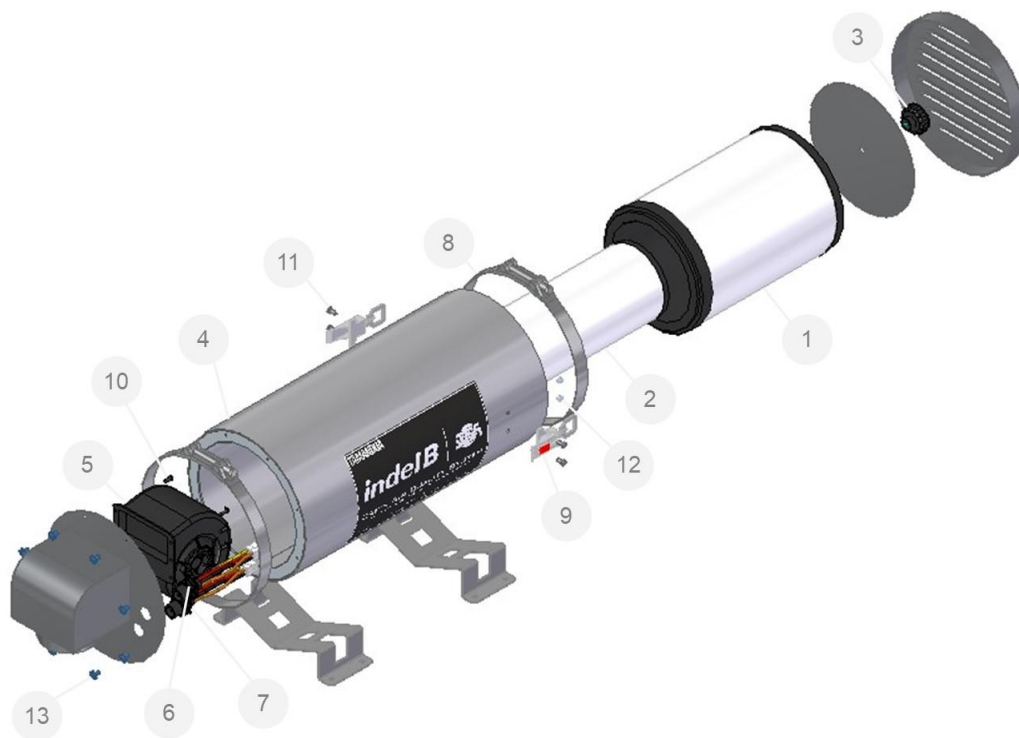
Filtro Combinato HEPA+Carboni / Combined HEPA Filter + Carbon

AA0017ES - (24v)

Filtro Combinato HEPA+Carboni / Combined HEPA Filter + Carbon

TAMANDUA

Components part



N°	Descrizione / Description	Cod.
1	Prefiltro / Prefilter	G02070060
2	Filtro HEPA / Filter HEPA	G02070061
	Filtro a Carbone / Carbon Filter	G02070062
	Filtro Combinato Hepa+Carbone / Combi filter HEPA+Carbon	G02070063
3	Pomello M10 / Knob M10	U04120123
4	Lamiere / Steel	L047100338
5	Motore ventilazione / Blower (12V)	V02240005SP
	Motore ventilazione / Blower (24V)	V02240006SP
6	Impianto elettrico / Electrical wiring	X04510077
7	Sensore pressurizzatore / Pressurizer sensor	X045100279
8	Fascetta 260-275x25 / Clamp 260-275x25	U04120069
9	Elesa Ganter clamp / Elesa Ganter clamp	U041200332
10	Vite Autofil. TC+ bombata 4,2x13 Zn	S04800168
11	Vite TCEI M5x12 ribassata	S048000280
12	Dado Autobloc. M5 inox	S048000234
13	V.Button Flang. M6x12 Inox	S04800001-1

TAMANDUA

List of supplied materials



Aria / Air filter



Prefiltro Part.: G02070060

Filtro HEPA Part.: G02070061

Filtro a Carbone
Part.: G02070062

Filtro combinato
Carbone+HEPA Part.:
G02070063

Motore ventilazione / Blower



+12v Part.: V02240005SP

+24v Part.: V02240006SP

Tubo corrugato / Corrugated hose



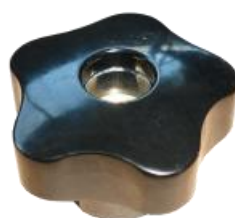
Part.: D02040044

Fascette inox / stainless steel
clamps 260-275x25mm



Part.: U04120069

Pomello / Knob



Part.: U04120123

Impianto elettrico / Electrical
wiring



Part.: X04510077

TAMANDUA

Optional components

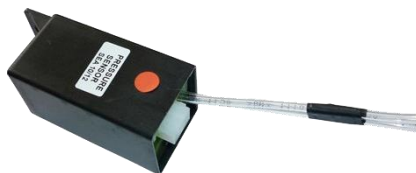


Pannello elettronico di controllo
pressione



Part.: A0ZZ40ES

Rilevatore elettronico della pressione,
con sensore acustico di allarme.



Part.: P02500021

TAMANDUA

Air filter specifications

Part.: G02070060

Type: Synthetic media electrostatically charged flame retardant

Applications: Electrostatically charged flame retardant HVAC and cabin air filters.

Physical properties	Units			
Mass per unit area		G/m ²		100
Thickness	0.5 kPa	µm		630
Air permeability	200 Pa	L/m ² /s		1670
Tensile strenght	Dry	N/m	MD	2900
			CD	1800
Tensile strenght	Wet	N/m	MD	1800
			CD	1100
Elongation	Dry	%	MD	14
			CD	15
Pore size		µm	Max	160
			Med	140
Gurley stiffness	Dry	mg	MD	910
			CD	570
Burst strength	Dry	kPa		490
	Wet			350

Part.: G02070061

Type: Microglass filter media HEPA H13 1,7

Applications: Air Filter

Physical properties	Units	MIN	STD	MAX	Test Method CONDITIONS 23 ±2°C – 50% ±5 U.R
Grammage	Gr/m ²	70	72	74	TAPPI T410
	Lb/3000 ft ²	43	44,2	45,5	
Thickness	mm	0,38	0,42	0,46	Internal Method
	mils	15	16,5	18,1	
Pressure Drop	mm H2O		26	28,5	@ 5.32 cm/sec
	Pa		255	279	
MPPS Efficiency	%	99,97			EN1822 @ 1.7 cm/sec
Tensile MD	kN/m	0,8	1,2		TAPPI T494
	Gr/inch.	2.044	3.067		
	Kg/15mm	1,22	1,84		
Tensile MD After fold	kN/m	0,57	0,8		Internal Method
	Gr/inch.	1.457	2.044		
	Kg/15mm	0,87	1,22		
Elongation MD	%	1	1,2		TAPPI T494
Stiffness MD	mg	800	900		TAPPI T543
Water Repellency	mm	400	700		Mil Std 282 (Q-101)
	inches	16	28		
Loss of ignition	%		6	8	T 30' – T250°C
Yield	M ² /Kg	14,3	13,9	13,5	Internal Method
	Ft ² /lb	69,8	67,8	66	

Part.: G02070062

Type: Activated Carbon

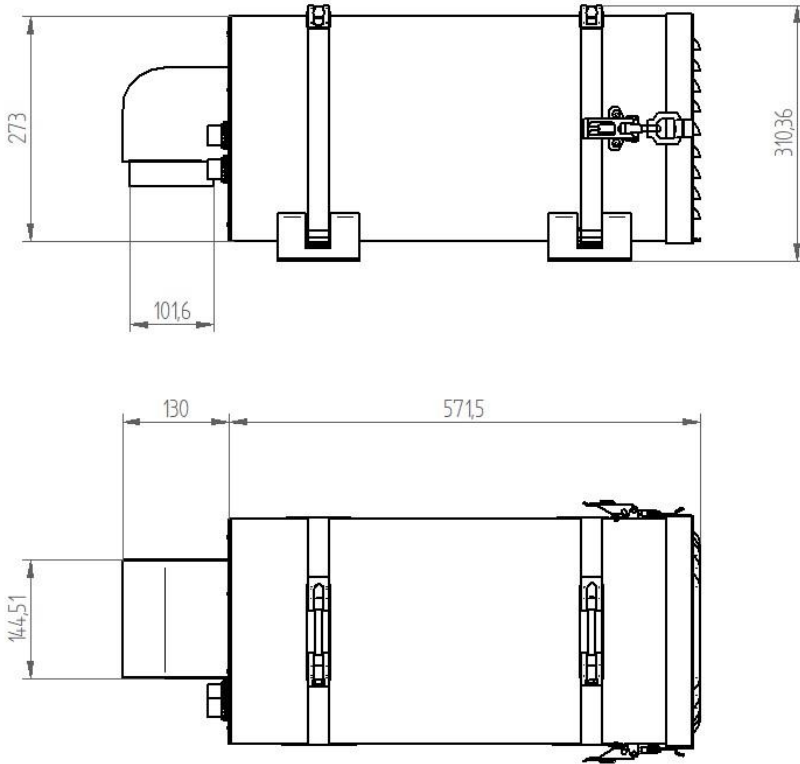
Description: NORIT RB 1 is a steam activated extruded carbon with a particle diameter of 1 mm. The favourable adsorption properties result in a high adsorption capacity and removal efficiency for contaminants present at moderate concentrations in gas flow. The extruded particle shape allow a low pressure drop over the filter. NORIT RB 1 is used in gas phase applications dealing with moderate (in general until 1g/m³) concentrations requiring high removal efficiencies.

General characteristics	Units	
Butane adsorption at		
p/po = 0.42	g/100g	23
p/po = 0.1	g/100g	21
p/po = 0.01	g/100g	17
Benzene adsorption at		
p/po = 0.1	g/100g	33
Total surface area (BET)	m ² /g	1100
Carbon tetrachloride activity	g/100g	60
Apparent density	Kg/m ³	500
Ball-pan hardness		99
Ash content	Mass-%	6
Moisture (as packed)	Mass-%	1
Ignition temperature, above	oC	450

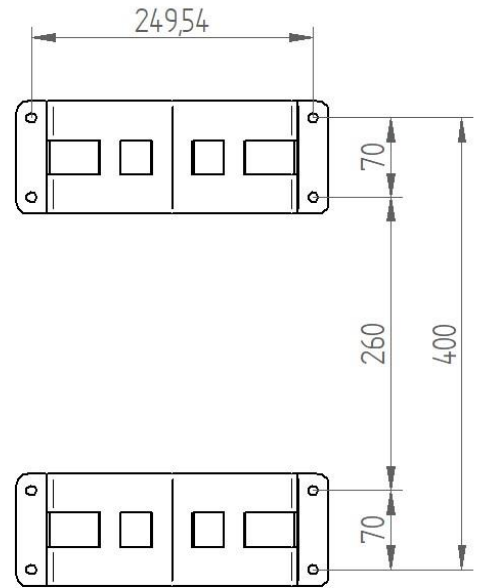
TAMANDUA
Dimension



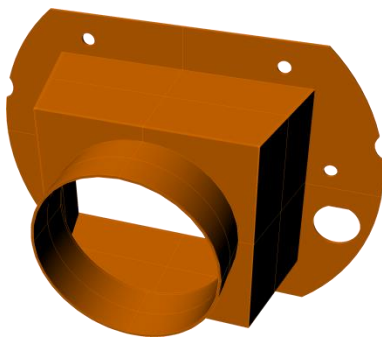
Dimensioni / Dimensions



Dima per fissaggio / Template for fixing

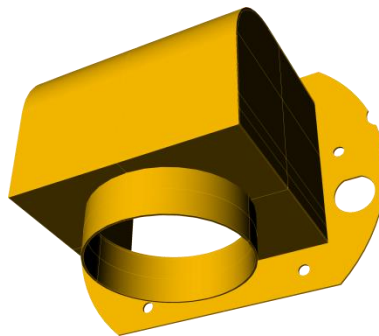


Imbocco 180° / Inlet to 180°



Diametro / diameter ext. 100mm

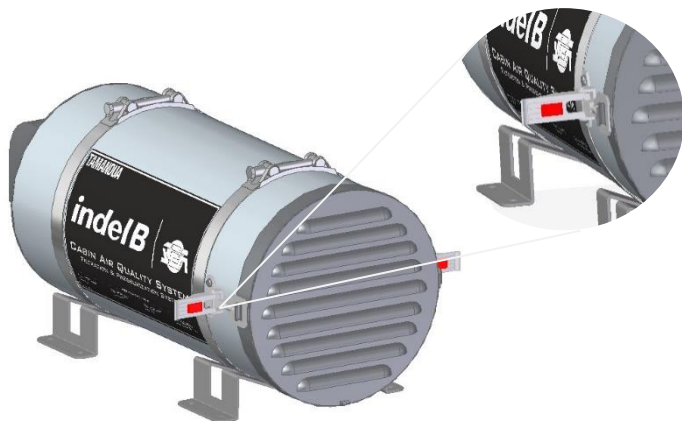
Imbocco 90° / Inlet to 90°



Diametro / diameter ext. 100mm

TAMANDUA

Replacing filters



Aprire l'unità sollevando i ganci di chiusura
Open the unit by lifting the locking hooks



Rimuovere il coperchio
Remove the cover



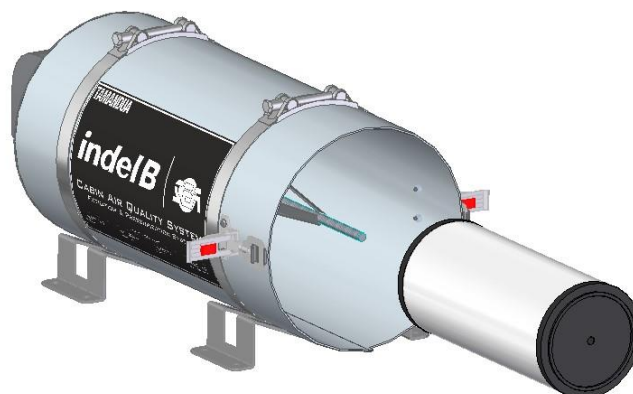
Svitare e rimuovere il pomello
Unscrew and remove the knob



Rimuovere la piastra di chiusura
Removing the locking plate



Estrarre il pre filtro
Pull out the pre-filter



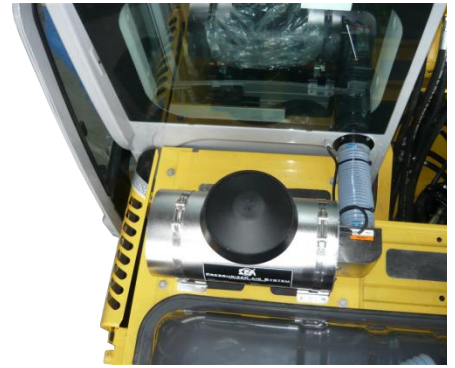
Estrarre il filtro
Pull out the filter

TAMANDUA

Installation instructions



Esempi di installazione / Examples of installation



1

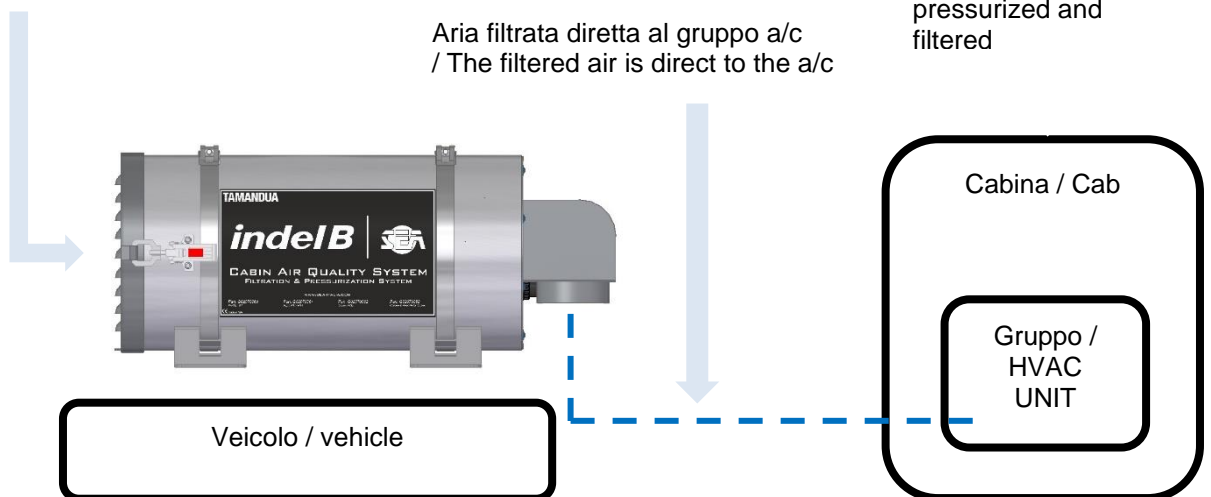
Ingresso aria non filtrata / Inlet unfiltered air

2

Aria filtrata diretta al gruppo a/c / The filtered air is direct to the a/c

3

L'aria all'interno della cabina è pressurizzata e filtrata / The air inside the cabin is pressurized and filtered

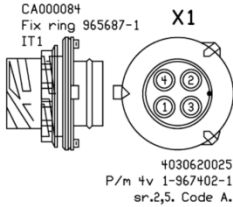


TAMANDUA

Wiring diagram



Spina esterna al gruppo
Plug external the group



- 1. Nero (sez.2.5mm)
- 2. Rosso (sez.2.5mm)
- 3. Arancione (sez.2.5mm)
- 4. Giallo (sez.2.5mm)

- 1. Black (sec.2.5mm)
- 2. Red (sec.2.5mm)
- 3. Orange (sec.2.5mm)
- 4. Yellow (sec.2.5mm)

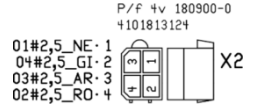
Lunghezza cavo /
Length of cable 120mm



- 1. Nero (sez.2.5mm)
- 2. Giallo (sez.2.5mm)
- 3. Arancione (sez.2.5mm)
- 4. Rosso (sez.2.5mm)

- 1. Black (sec.2.5mm)
- 2. Red (sec.2.5mm)
- 3. Orange (sec.2.5mm)
- 4. Yellow (sec.2.5mm)

Spina interna al gruppo
Plug inside the group

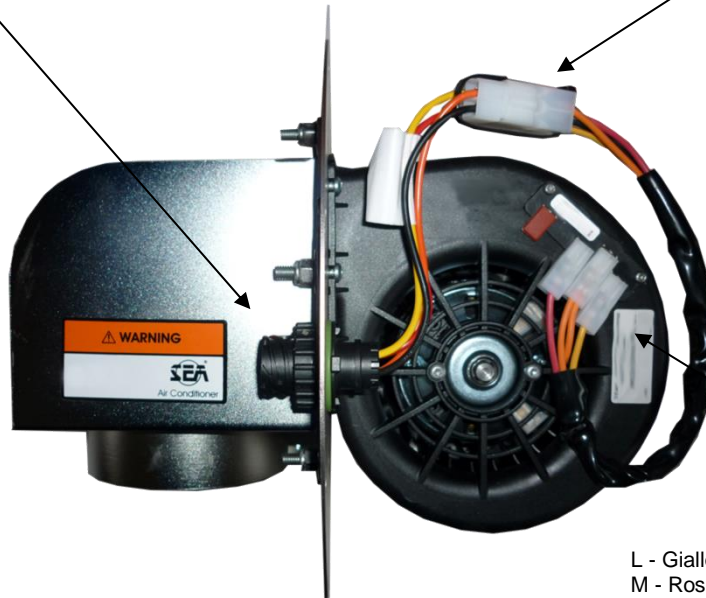


Presca di collegamento al gruppo
Socket connection group



- 1. Nero (sez.2.5mm)
- 2. Rosso (sez.2.5mm)
- 3. Arancione (sez.2.5mm)
- 4. Giallo (sez.2.5mm)

- 1. Black (sec.2.5mm)
- 2. Red (sec.2.5mm)
- 3. Orange (sec.2.5mm)
- 4. Yellow (sec.2.5mm)



Collegamento motorino
Connection motor



- L - Giallo (sez.2.5mm) => 1°Velocità
- M - Rosso (sez.2.5mm) => 2°Velocità
- H - Arancione (sez.2.5mm) => 3°Velocità

- L - Yellow (sec.2.5mm) => 1°Speed
- M - Red (sec.2.5mm) => 2°Speed
- H - Orange (sec.2.5mm) => 3°Speed

TAMANDUA

Prescriptions for mounting the SEA/TAMANDUA Pressurized

Per la corretta pressurizzazione della cabina, controllare le guarnizioni e chiudere eventuali fori.

Avvertenze

Verificare con apposito strumento che la pressione all'interno della cabina, a veicolo in moto e impianto di pressurizzazione acceso, **non superi i 200 Pa**. Per avere un ambiente confortevole per l'operatore, la pressione all'interno della cabina deve oscillare tra i 50 Pa e i 150 Pa. Normative di riferimento **SAE J1012, SAE J1503, ISO-10263-3, ISO-14269-5**.